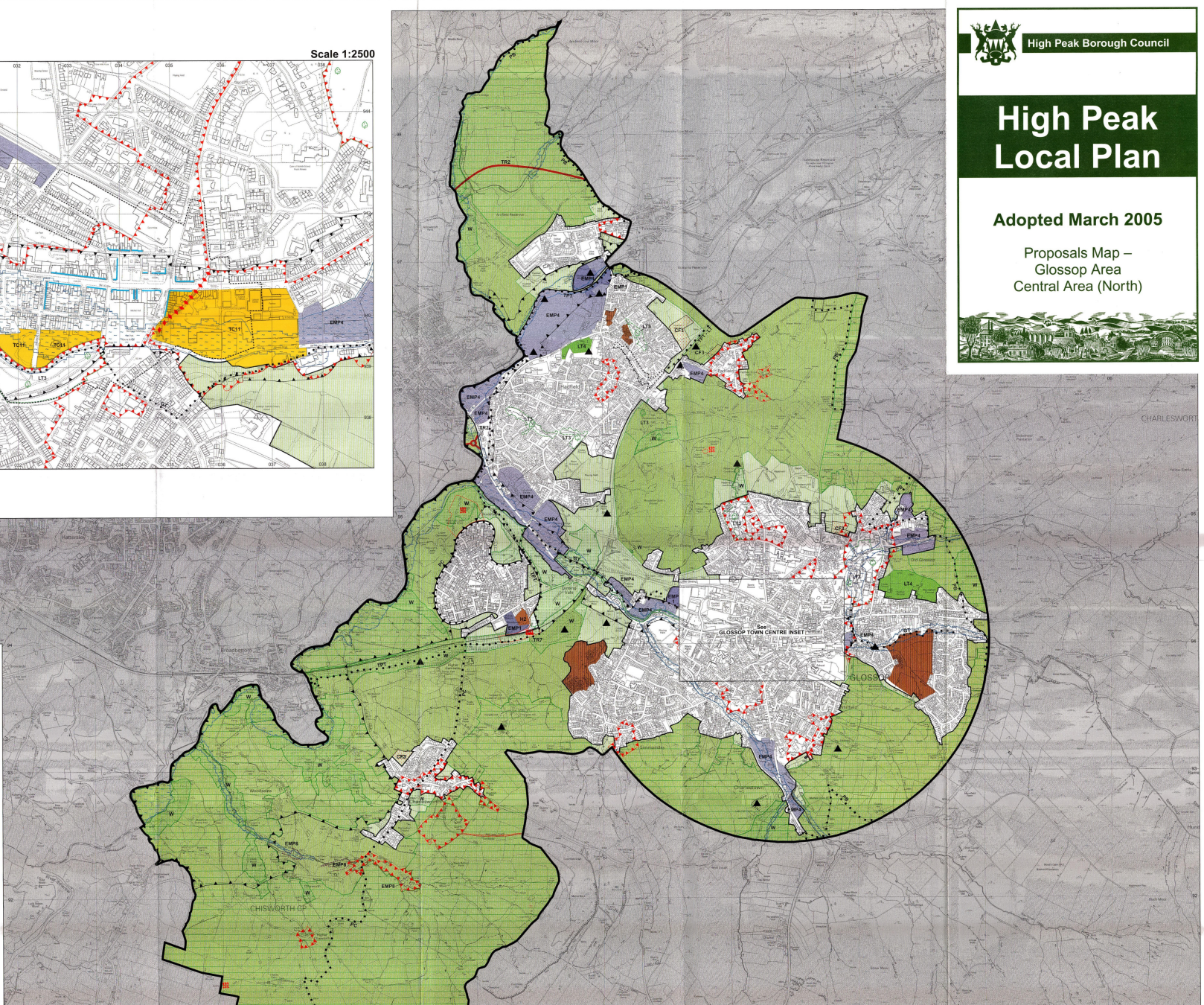
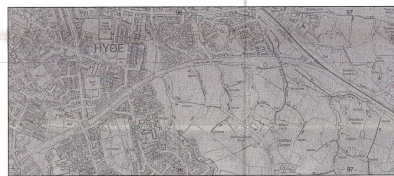
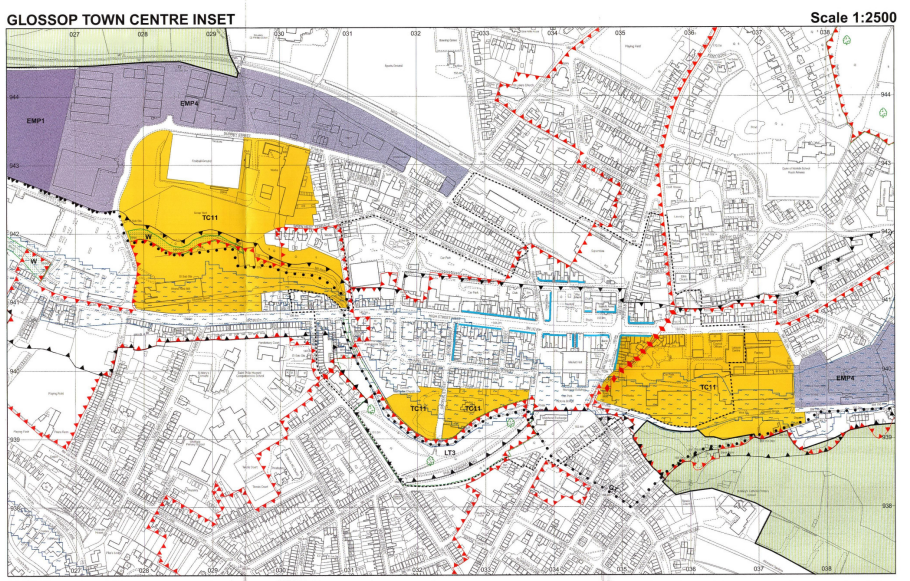


# High Peak Local Plan

Adopted March 2005

Proposals Map –  
Glossop Area  
Central Area (North)



**HIGH PEAK BOROUGH COUNCIL  
HIGH PEAK ADOPTED LOCAL PLAN**  
March 2005

- |   |   |
|---|---|
| <ul style="list-style-type: none"> <li> Green Belt (GCB, OCA, EMP1)</li> <li> Conservation Area (BC1, BC2, BC3, BC4, BC5, BC6)</li> <li> Special Landscape Area (SLA, OCA, OCB, OCB1)</li> <li> Sites of Importance for Nature Conservation (SINC)</li> <li> W - Designated Wildlife Site</li> <li> Regeneration Area (TC1)</li> <li> Land for Housing (H)</li> <li> Land for Industry/Business (EMP1)</li> <li> Primary Employment Zone (EMP4)</li> <li> Land for School/College Use (CF)</li> <li> Land for Recreation/Open Spaces (LS)</li> <li> Built-up Area Boundary (GCB, H, EMP1, LT)</li> <li> Conservation Area (BC1, BC2, BC3, BC4, BC5, BC6)</li> <li> Town Centre (TC1, TC2, TC3, TC4, TC5, TC6, TC7, TC8, TC9, TC10, TC11, TC12, TC13)</li> <li> Improvement Corridor (GCB, BC1)</li> </ul> | <ul style="list-style-type: none"> <li> Proposed Road (TR2)</li> <li> Land for Railways (TR)</li> <li> Long Distance and Local Trails (TR13, TR14)</li> <li> TR1 - Trans Pennine Trail</li> <li> TR2 - Pennine Bridleway</li> <li> TR3 - Pennine Cowsley</li> <li> TR4 - Longdendale Trail</li> <li> TR5 - Gossop Trail</li> <li> Major Developed Site in the Green Belt (EMP5)</li> <li> Scheduled Ancient Monument (BC10)</li> <li> Listed Site (GD12)</li> <li> Protected Major Park (L3)</li> <li> Primary Rural Frontage (TC12)</li> </ul> |
|---|---|
- FOR INFORMATION**
- Local Plan Area Boundary
  - High Risk Flood Area as defined by the Environment Agency (G06)
  - Significant Site recently developed or with permission for housing

High Peak Borough Council  
Regeneration Service  
Municipal Buildings  
Glossop  
Derbyshire  
SK13 8AF  
Tel: 0845 129 7777  
Fax: 01457 860200  
E-mail: localplan@highpeak.gov.uk

March 2005



Base Mapping at 1:10,000 scale. Inset map of Glossop Town Centre at 1:2500 scale.