



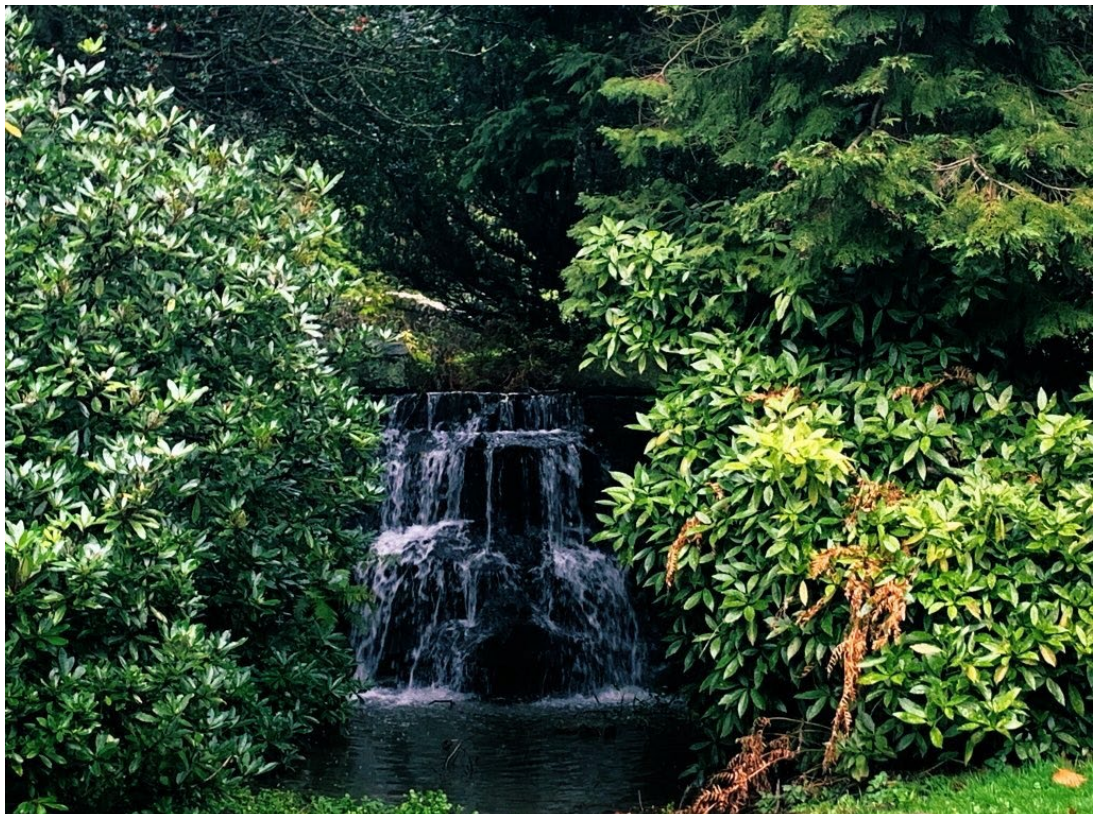
High Peak Borough Council

*working for our community*

# Howard Park

## Management Plan

**2021 - 2031**



## **1 Foreword**

Howard Park is a Victorian Park, originally designed to maximise its natural features and provide an oasis in what was a rapidly growing urban environment fuelled by the expansion of the mills in the town. It is thanks to both the benefactors (The Wood family) and the vision of the renowned landscape architect Henry Milner that we have today a park that provides a valuable recreational resource to this area of Glossop.

With limited resources it is of paramount importance that priorities for the development of the park are identified. This management plan will recognise all of the valuable work that has been done to date and focus on the future management and maintenance of the park. Taking into account sustainable considerations it will ensure that any developments or refurbishment are completed in a manner, which are sensitive to local community needs and the nature of the park in terms of its historic, ecological, and environmental value.

## **2 Introduction**

This plan will define the current and future management and maintenance of Howard Park for a 10-year period from 2021 to 2031 with a review annually. In compiling the plan we acknowledge the essential and valuable contribution from all key stakeholders, partners, councillors and community groups. Without their contribution this plan would be meaningless.

## **3 The Purpose of the Management Plan**

It is imperative that this management plan provides clear direction for the future management and maintenance of the park, ensuring that the park is conserved and enhanced in its entirety whilst balancing the needs of visitors and residents alike.

This management plan seeks to: -

- Take a holistic approach to the future management of the park by assessing professional and community needs and desires.
- To establish a shared vision and objectives for the park.
- Ensure community involvement within the development and management of the park.
- Establish standards that are effective and accountable to ensure clear management and maintenance objectives are identified and implemented.
- Benchmark the park and analyse the management regimes and policies against best practice.
- Prioritise resources and action to ensure effective management of the park and the success of any future developments.

## **4 Responsibility of the plan**

High Peak Borough Council is responsible for the overall management of all of our parks and open spaces.

The Service Commissioning section of High Peak Borough Council working in partnership with all stakeholders and the community has compiled this plan. Implementation of the plan will also be led by the Service Commissioning section with specific project leads as shown in the Action Plan.

Likewise, the monitoring and review of the plan will be led by the Service Commissioning section. It is recognised that regular effective monitoring and review of the plan will ensure that the document evolves to meet changing priorities.

However, all key stakeholders and users of the park together with the wider local community will be engaged to ensure that future revisions reflect a combination of views, needs and aspirations.

## **5 Strategic Context of the Management Plan**

The Parks Strategy is the overarching document that sets out the strategic context which informs the management of all our parks. For this strategy to focus on the future effectively, it is important to recognise the key influencing documents and evidence base which frame the provision and development of parks. It is also equally important for people to understand the current context in which parks are managed and maintained as this will play a part in decision making and delivery of future projects which aim to maintain and enhance the parks.

The purpose of our Parks Strategy is to bring these key issues into focus and by doing so:-

- 1) Set the overarching context and direction for the management and development of our parks and green spaces.
- 2) Outline the approach for managing and developing parks and green spaces which considers the Council's resources, management and maintenance responsibilities and the contribution of partners, community and interest groups.
- 3) Highlight a set of principles which will guide future maintenance, investment and community engagement in our parks and green spaces.
- 4) Agree a set of priorities and objectives which focus effort, resources and decision making to ensure that parks and green spaces remain high quality spaces for everyone to enjoy.
- 5) Help secure additional investment and external funding to enhance the parks infrastructure, facilities and opportunities for the benefit of the community.

## **6 Site Details**

### **6.1 Site Address and Access**

Howard Park lies about 0.5km to the north-west of Glossop town centre. The 4.4-hectare site which rises from south to north sits in an area that is predominantly residential. Wood's Baths (Glossop swimming pool) is sited at the south-west corner of the park and Wood's Hospital (Reubens Retreat) at the north-west corner.

#### **The address for the park is: -**

Howard Park, Park Crescent, Glossop, SK13 7BQ

**It should be noted however that postal correspondence relating to the park should be directed to:**

Service Commissioning, Buxton Town Hall, Market Place, BUXTON. SK17 6EL

**A plan of the site is shown below.**



Car parking at the park is very limited with a small car parking area situated adjacent to Glossop Swimming pool. This car park can be accessed from Park Crescent.

Although car parking is restrictive the park is easily accessible from the town centre of Glossop with a short walk of approximately 15 minutes. Glossop town centre has transport links via buses and train to Manchester, Sheffield and the surrounding areas of the High Peak and Tameside.

The main entrance to the park is from Dinting Road, to the south with a secondary entrance at the north-east corner of the park at the junction of North Road and Park Crescent. Both entrances are clearly identified with stone gate pillars and iron railing in keeping with the original layout of the site as a public park.

**6.2 Ownership and Designations**

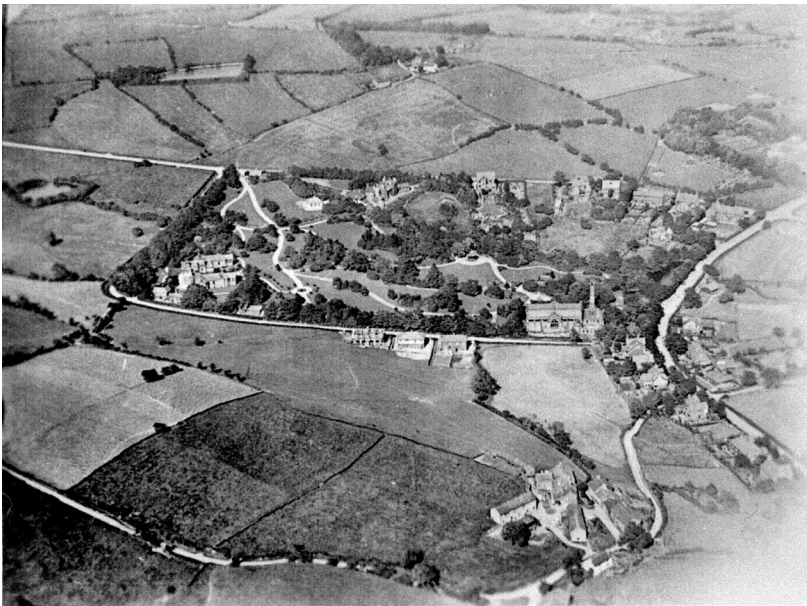
The site is exclusively owned by High Peak Borough Council and is designated as a Protected Major Park.

The site is designated as a Conservation Area, Howard Park Conservation Area.

The park sits within the Dinting Ward of High Peak Borough Council. The town of Glossop lies within the High Peak area of Derbyshire, with a resident population c33,000. In recent years there has been an increase in residential developments and as such it is likely that population growth for the area will continue to rise.

There are no rights of way across the site.

Howard Park is within Old Glossop Conservation Area and the trees are an essential element of the landscape setting of the Conservation Area. The council will manage the trees accordingly following the principles set out in the Tree Policy and good practice guides.



An aerial view of Howard Park in 1930

## 7 Physical Assets

It is essential to fully understand the physical assets of Howard park including both natural and manmade features. This will assist in determining the strengths and weaknesses in the information base for the park. This in turn will provide a better understanding of the context of the park and inform how we might develop and effectively manage the park for the future.

Howard Park is classed as a formal park. Its recognised value by all regular users and visitors to the park lies in its heritage, water courses, natural landscape, and formal planting. The park is an oasis of calm that creates a sense of peace and tranquillity. Howard Park has retained much of the original layout and as such the path network provides visitors with the opportunity to enjoy the natural contours of the park and the varied interest of the planting and landscape.

Although the range of facilities on offer to visitors are limited this serves to add to its overall value and appeal, as a park that feels unchanged in an ever-changing world.

The park has a small toddler play area that is regularly used by both visitors to the park and families using the swimming pool.



## 8 Historical Heritage

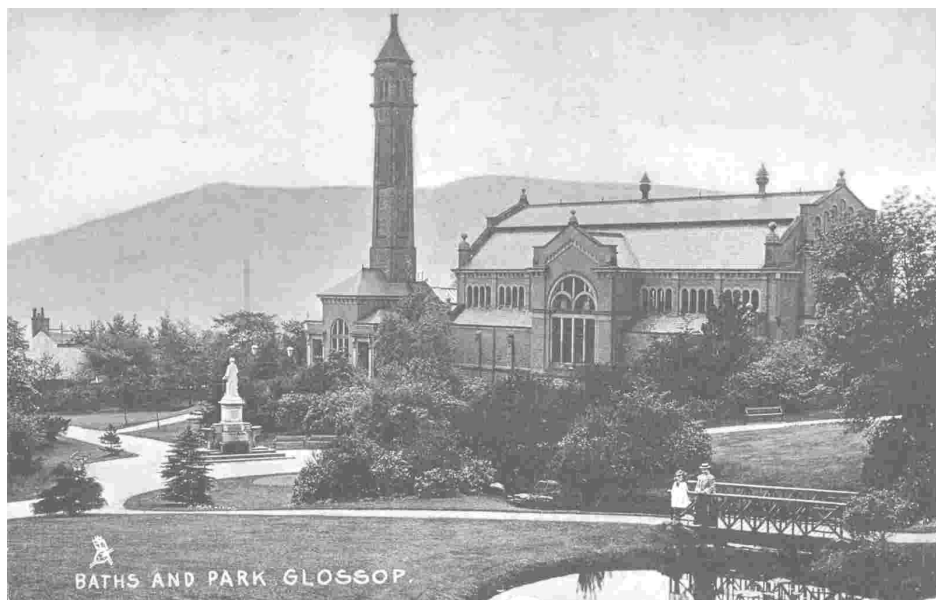
The heritage value of Howard Park is recognised by its Historic England classification as a Grade II Registered Park and Garden (List Entry No 1001517).

In 1606, the manor of Glossop was acquired by the Howard family, whose head was the Duke of Norfolk and who also carried the title of Lord Howard of Glossop. In the 19<sup>th</sup> century, the twelfth and thirteenth Dukes began the development of new Glossop, also now known as Howard Town, by constructing a new Town Hall, Market Hall, and railway station. It was at this time that Lord Howard donated the land, now known as Howard Park, as a Jubilee gift to the town. However, the money for its design and layout was provided by the Wood family, in particular Mrs Ann Kershaw Wood.

The Wood family were prominent wealthy local mill owners, Victorian Philanthropists who had an enormous influence on the development of industrial Glossop. Ann Wood was married to Samuel Wood, the third son of John Wood who built Howard Town Mills. Samuel and his brothers followed their father into the family businesses and made many gifts to the town. It could be said that the Wood's had developed a conscience about the needs of the workers, and this followed the national trend at the time in most large industrial towns, to provide a public park for recreational facilities.

The triangular plot of land chosen for the park was on the northern edge of the town and was known as Barbers Clough. It comprised of several small fields with a stream running through a gully (known as Robin Hood's Gutter) and was traversed by footpaths. A reservoir at the south-eastern corner was to become the lake.

The landscape architect who was employed for the design and layout of the park was Henry Milner. Henry was the son of Edward Milner, who himself had become a well-known landscape architect and was renowned for his designs at Crystal Palace and more closer to home at the Pavilion Gardens in Buxton.



The design ideas of the time, particularly those of botanical specialisation, were put into practice at Howard Park. These included a fernery, rock garden, clumps of tree species and an American garden. It was a time when plants were better appreciated for their form and colour and the contribution, they made to garden design. Trees were also planted to compliment the scheme and provide contrasting colour of foliage. Milner enhanced the natural topography of the site to create changes of level, hiding and separating parts of the park so that the whole cannot be seen from any viewpoint. Wood's Hospital and Wood's Baths were built at the same time, within the perimeter of the plot of land, thus offering three health promoting facilities all on one site.

Howard Park, which should have originally been called Victoria Park in honour of the Queen's Golden Jubilee, was officially opened in June 1888. Mrs Wood and Lord Howard agreed between them that it should be named Howard Park.



The opening ceremony was very understated at the request of Mrs Wood whose husband Samuel and his brother Daniel had only recently died. It is in their memory that the Wood's statue was erected. In the local paper an observer describes the ceremony ' . . . proceeding to the gates the Mayor unlocked them and simply said, I declare this park open to the public, which by the way, is one of the briefest speeches I have ever heard and to which can be applied the description short and sweet.'

A detailed description of the park is recorded in the Glossop Chronicle on 23<sup>rd</sup> June 1888. The main features mentioned in this article are summarised below:

- Over a mile of curving paths, at two points crossing the central stream over rustic bridges
- A central water feature created from the stream, with a series of cascades and pools and rocks, culminating in an ornamental lake with an island
- A bandstand and covered seat in a circular space placed with views north-south and east-west across the park
- An ornate fountain
- A maze, rockery, fernery, and an American Garden
- Two 'pretty' entrance lodges at the north and south entrances to the park
- About 14,000 shrubs and trees described as 'an example of almost every species of plant that will succeed in this district and some of them a rare kind'.

Carder in his article on The Work of Edward Milner in Derbyshire, states that the combination of Milner's 'natural' landscape with formal features (statues, fountain and bandstand) is an example of how 'the Victorian garden displayed a curious amalgam of the love of the natural countryside with a taste for what was often a laboriously contrived ceremonial.'

Although the park remained primarily for informal recreation serving the local community, the lack of investment in public parks and the impact this had on the general maintenance, meant that some of the park's main focal points, deteriorated and were subsequently removed.

The bandstand and its covered seat were removed and replaced with the children's playground. The fountain was also removed but the original stone base was retained and is now used as a bedding display.

It is believed that the two stone lions near to the entrance off Dinting Road, were added to the park at a later date as they are not mentioned in the description of the park at its time of opening. Greenhouses were also installed which supplied plants for both Howard and Manor Parks, however, these were removed in 1976.

## **9 Value Assessments**

### **9.1 Heritage Value**

The conservation status of Howard Park recognises its heritage value and emphasises the importance of protecting and conserving the park to preserve its historical character.

The key assets of Howard Park are also its key heritage features:-

- The Wood's Memorial Statue
- The Howard stone Lions
- The ornamental lake and watercourses
- The stone base of the fountain
- The original layout and landscape features as set out by Henry Milner



## **9.2 Educational Value**

Howard Park provides a wealth of opportunities as a valuable educational resource which can be utilised by the local primary schools, beavers, cubs, scouts, and brownies. Its strength as an educational resource lies in its retention of historical features and the relatively unchanged landscape layout of the park. These features provide opportunities for research and interpretation to recognise the parks significance.

## **9.3 Recreational Value**

Howard Park is a Victorian urban park, which predominantly serves the local community of Glossop. Its purpose is very much about informal recreation. The design and layout of the park lends itself to quiet enjoyment, taking in the stunning views and vistas and ornamental lake.

The park does have a small play area for toddler use.

## **9.4 Amenity Value**

The park is easily accessible from the centre of Glossop and sits adjacent to Glossop swimming pool. It is valued by those that use it for its natural feel which is in sharp contrast to the facilities on offer at Manor Park. The park is an extremely important amenity resource to the local community and has a significant impact on the quality of life for local residents.

## **9.5 Ecological Value**

Howard Park is a valuable green space located in an urban environment which creates a wildlife corridor to the open moorland beyond. It provides important habitats for flora and fauna such as birds, small mammals, and invertebrates.

The park's character is very formal to preserve the integrity of the heritage landscape layout. This seeks to prevent the establishment of extensive informal areas which would detract greatly from its significance as a historic park.

However, the extensive variation in tree and shrub planting together with the natural watercourses that flow through the park will support a wide range of increased opportunities to enhance the existing biodiversity of the park.

## **10 Management Responsibilities**

High Peak Borough Council is responsible for the overall management of the Howard Park. We work with partners, community, and interest groups to develop and deliver projects that improve the green space.

Alliance Environmental Services (AES) is contracted by the Council to undertake the day-to-day maintenance of the park and they also have the budgetary responsibility. A schedule for the associated standards of maintenance is defined by the contract with AES, and the park itself has a specific maintenance schedule found in Appendix 1.

Community and interest groups including 'Friends of the Parks' are a vital and valued support network and play an important role in assisting with maintenance and development projects. These groups also can provide additional capacity, undertake selected maintenance tasks and can attract additional funding to improve the parks.

## **11 Health and Safety**

Health and safety is of primary concern for the Council. AES are responsible for the day-to-day maintenance and management of the site and this includes keeping the park safe for the public to use. Daily visual inspections, six monthly in-depth surveys and regular tree inspections are all part of the suite of checks and procedures, which are in place. These will ensure that all issues, repairs and replacements are identified quickly and scheduled into the work programmes as necessary.

The park has a site-specific risk assessment which is reviewed and updated annually by the Operations Service Lead (AES). All AES staff are given specific training to ensure they are always operating in a safe manner. Any work on our parks and open spaces, which are carried out by external contractors, partners, community groups/volunteers are governed by the Council's health and safety policies, which they must abide and follow.

## **12 Involving Communities**

It is well recognised that for any park to be successfully managed it must respond to the needs of the local community and park users. Actively engaging and encouraging community participation and involvement is essential in the continued development of the park.

The Friends of Howard Park are an active group who aim to:

- Provide a community focus for the park
- Take practical action to improve the park
- Raise the profile of the park
- Continue to raise funds to improve the park

In 2005 the Friends of Howard Park was established. Since that time, the group have worked proactively to promote Howard Park as a key historical green space in Glossop. The group have undertaken regular annual events and community projects which have helped to generate community engagement, support and ownership in the park.

## **13 Marketing and Communications**

High Peak Borough Council is responsible for managing Howard Park and has a variety of communication mechanisms that can be utilised to give feedback on the performance and continued relevance of this Management Plan. As the Council is committed to reducing the need for paperwork there is an increased reliance on the use of the relevant sections of the High Peak Borough Council Website.

The Council has both a Facebook page and Twitter account

- Facebook - <https://m.facebook.com/highpeakbc>
- Twitter - <https://twitter.com/HighPeakBC>

For anything specific to Howard park the link below gives a number of options for how you might get in touch

- <https://www.highpeak.gov.uk/article/1665/Howard-Park-Glossop>

The Council can also be contacted by writing to

**Service Commissioning, Buxton Town Hall, Market Place, BUXTON. SK17 6EL**

## 14 Action Plan

The Parks Strategy provides the guiding principles and headline priorities for the management and development of our parks and following on from this, we can develop specific site action plans. These plans identify our priorities, linked to the Strategy, and ensure they are appropriate, relevant, resourced and provide a flexible and realistic approach to realising the aims of the Management Plan.

### Parks Strategy Objectives

- Objective 1** We will review maintenance regimes to ensure our parks and open spaces are maintained to a high standard, in an affordable and sustainable way and consider improvements to increase and enhance biodiversity and positively affect climate change. (addresses priorities 1, 2 and 4)
- Objective 2** We will ensure that infrastructure and heritage features are protected and well maintained, in accordance within the resources available to the Council. (addresses priority 1, 2, 3 and 4)
- Objective 3** Encourage and enable positive physical and mental wellbeing by developing strong partnerships with community groups, sports clubs and other stakeholder groups to ensure parks fulfil their potential for enabling healthy lifestyles for all ages. (addresses priority 3 and 4)
- Objective 4** Ensure that parks are safe, welcoming and accessible places for the whole community and that the highest possible standards of health and safety are maintained by our service providers, event organisers and when engaging the community in projects. (addresses priority 3 and 4)
- Objective 5** Actively encourage community engagement and involvement in the protection, maintenance and development of our parks. (addresses priority 3 and 4)
- Objective 6** Effectively manage internal budgets and attract external funding wherever possible towards the ongoing maintenance and the future development of our parks. (addresses priority 1,2,3 and 4)
- Objective 7** We will review park management plans and their associated actions plans annually to ensure these objectives are being delivered against effectively. (addresses priority 1,2,3 and 4)
- Objective 8** We will create a Parks Development Fund to be used to make improvements to our parks and green spaces. (addresses priority 1,2,3 and 4)

## Howard Park Action Plan 2020 -2030

### Objective 1 To protect and enhance biodiversity, address the effects of climate change and ensure the park is sustained for the future

Action	When	Estimated Cost	Responsibility	Resources	Partners	Comms	Status
Explore areas for naturalisation across the site and identify opportunities (underpinned by professional advice from DWT) for habitat creation	Autumn 2021	unknown	HPBC	Existing/ External funds	AES/Council/Biodiversity Whaley/DWT/BB&BFC	Signage on site/PR	
Review current maintenance regimes to identify best practice that reflects emerging principles which address climate change	Spring 2022	unknown	HPBC	Existing/ External funds	AES/Council/Biodiversity Whaley /DWT	Signage on site/PR	

## Objective 2 To protect and preserve our heritage features

Action	When	Estimated Cost	Responsibility	Resources	Partners	Comms	Status
Ensure that the heritage significance of the park is protected and conserved for the future	Ongoing		Council/Friends		AES/Council/Friends		

## Objective 3 To identify opportunities for encouraging physical activity

Action	When	Estimated Cost	Responsibility	Resources	Partners	Comms	Status
Continue to promote and maximise the opportunities for physical activity within the park.	Ongoing	Unknown	HPBC	HPBC/ Active Derbyshire/ Public Health/Friends group	Public Health/ Active Derbyshire/Friends group/AES		

#### Objective 4 To ensure our parks are safe, welcoming and accessible for the communities they serve

Action	When	Estimated Cost	Responsibility	Resources	Partners	Comms	Status
Work with external partners to identify easily accessible routes for all in the park	Autumn 2021		HPBC	Unknown			

#### Objective 5 Actively encourage community engagement and involvement

Action	When	Estimated Cost	Responsibility	Resources	Partners	Comms	Status
Continue to support the Friends of the Park	Ongoing		HPBC	Unknown	AES/other organisations		
Continue to engage with key stakeholders in the park	Ongoing		HPBC	Unknown	AES/other organisations		



## Objective 6 To ensure effective financial management of resources

Action	When	Estimated Cost	Responsibility	Resources	Partners	Comms	Status
Explore further external funding opportunities (HLF) to maximise developer contributions that have been allocated to the park	2022/23		Council/Friends	Identified s106 funds	AES/Council/Friends		
Remove and install new toddler facilities	2021/22		Council/Friends	Identified s106 funds	AES/Council/Friends		

## Objective 7 Review and Monitoring

Action	When	Estimated Cost	Responsibility	Resources	Partners	Comms	Status
Annual condition review of park infrastructure including seating, bins, paths	Annual	Unknown	AES/HPBC	AES/HPBC/Friends	Friends group	n/a	
Annual review of action plan for the park	Annual	n/a	HPBC	Existing	AES/Friends group/wider community		

## Appendix 1 – Routine Maintenance Schedule - Howard Parks

An asterix Indicates As Required

Feature	Activity	Jan	Feb	Mar	April	May	June	July	Aug	Sept	Oct	Nov	Dec	Total
<b>General Amenity Grassland</b>	Mowing ( to include specification for formal parkland ie weekly if this is achievable)			*	*	*	*	*	*	*	*	*		*
<b>Informal Grassland</b>	Mowing				1	1	1	1	1	1				6
<b>Shrub Beds - Formal</b>	Weed/delitter (routine pruning)			1	2	2	2	2	2	2	2			15
	Winter Cultivation			1							1			2
<b>Shrub beds - Informal</b>	Weed/delitter				1	1	1	1	1	1	1			7
<b>Heather bed alpine/rockery</b>	Weed/delitter (routine pruning)			1	2	2	2	2	2	2	2			15
<b>Herbaceous</b>	Spring maintenance			1										
	Summer maintenance				2	2	2	2	2	2	2			14
	Winter maintenance											1		1
<b>Seasonal bedding</b>	Preparation spring bedding										1			1
	Maintenance spring bedding	1	2	2	2	2						1		10
	Preparation summer bedding						1							1
	Maintenance summer bedding						1	4	4	4	1			14
<b>Hedge - Beech</b>	Hedge cutting							1				1		2
<b>Autumn Leaves</b>	Clearance												1	1
	Mulch											3	3	6
<b>Paths / hard Surfaces</b>	Blowing/Sweeping	1	1	1	4	4	4	4	4	4	1	1	1	30

<b>Water Courses</b>	Inspect and keep clear of detritus	Daily (working week)												
<b>Whole Site</b>	Litter Collection - daily				1	1	1	1	1	1				6
	Litter Collection - weekly	1	1	1							1	1	1	6
	Graffiti remove as and when it is identified within 24 to 48 hours													
	Dog fouling - remove and dispose when identified													
	Vandalism - make safe and either repair or report for remedial action within 24 hours													
<b>Playground Equipment</b>	Inspections - visual													
	Inspections - playground inspector													
<b>Litter Bins</b>	Empty - Daily				1	1	1	1	1	1				6
	Empty - Weekly	1	1	1							1	1	1	6
	Wash Down				1					1				2
<b>Benches</b>	Wash Down				1					1				2
	Repaint Iron Work/Re-treat Timber with Solignum													*
<b>Signage</b>	Wash Down				1					1				2